

# SPD3000X

## Series

### Programmable DC Power Supply



Data Sheet-2015.7

# SPD3303X

## SPD3303X-E

### Product Overview

SPD3000X Series Linear Programmable DC Power Supply has a 4.3 inches TFT\_LCD display, Supports Programmability and Real Time Wave Display, bringing a new experience to users. It has three isolated outputs: two adjustable channels and one selectable channel from 2.5v, 3.3V, and 5V. It also has output short and overload protect function, and can be used in production and development.

### Main Features

- ⚡ 3 independent controlled and isolated output, 32V/3.2A×2, 2.5V/3.3V/5V/3.2A×1, total 220W
- ⚡ 5 digits Voltage, 4 digits Current Display, Minimum Resolution: 1mV/1mA
- ⚡ Supports panel timing output functions
- ⚡ 4.3 inch true color TFT- LCD 480x272 display
- ⚡ 3 types of output modes: independent, series, parallel
- ⚡ 100V/120V/220V/230V compatible design to meet the needs of different power grids.
- ⚡ Intelligent temperature-controlled fan , effectively reducing noise
- ⚡ Clear graphical interface, with the waveform display function
- ⚡ Internal 5 groups of system parameter save/recall, supports data storage space expansion
- ⚡ Provides PC software: Easypower , supports SCPI , LabView driver



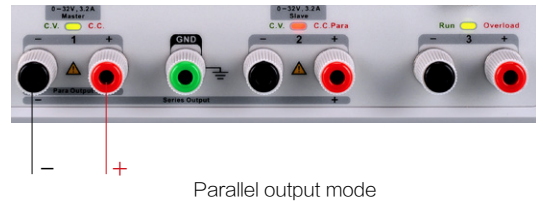
## Characteristics

### High-resolution and high-precision output

The highest resolution of 1mV/1mA (SPD3303X), provides excellent setting and read back accuracy. This ensures accurate output even with very small changes in voltage or current. This is impossible for a low resolution power supply.

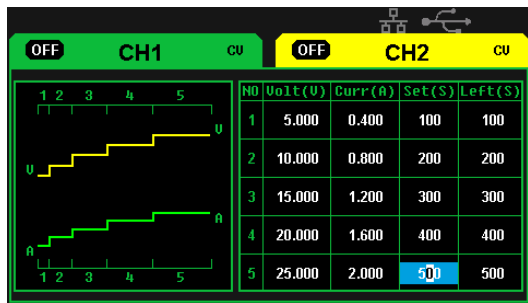
### Series/parallel/independent mode function

Series and parallel function allows two channels combined into one output with more power output capability, extending the application range. Each of 3 channels power can be turned on or off independently and also can be turned all on or all off.

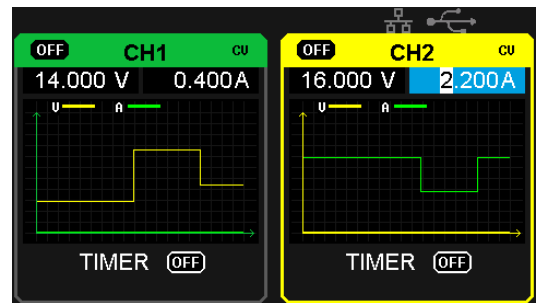


### Panel displays the timing output

Through front panel operation, 5 groups of timing settings and output control can be displayed, which provides users a simple power programming function. Also a connection can be made with Siglent's EasyPower PC software providing a full range of communication and control requirements.



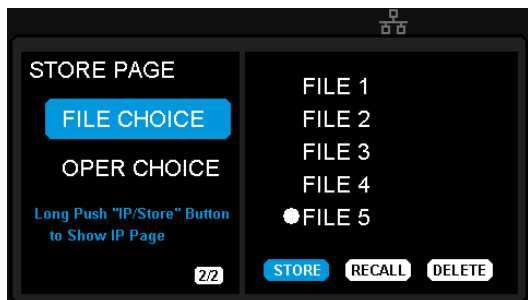
Panel timing output



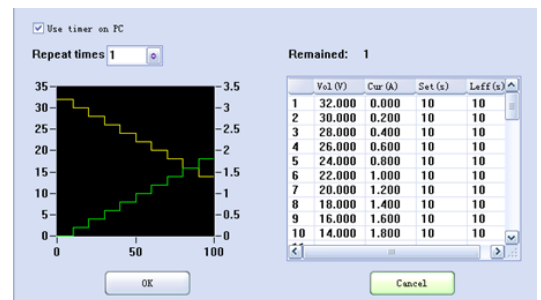
Real time wave display

### Save/Recall setting parameters

SPD3000X series programmable power supply can save or recall 5 groups of setting parameter in internal storage, also supports external storage expansion. You can easily obtain the settings you needed.



Internal Storage



PC Timer

## Specification

Model	SPD3303X-E	SPD3303X
Channel	CH1 output voltage: 0 ~ 32V, output current: 0 ~ 3.2A CH2 output voltage: 0 ~ 32V, output current: 0 ~ 3.2A CH3 output voltage: 2.5/3.3/5.0V, output current : 3.2A	
Display	4.3 inch true color TFT-LCD 4 digits voltage 3 digits current	4.3 inch true color TFT-LCD 5 digits voltage 4 digits current
Resolution	10mV/10mA	1mV/1mA
Program Accuracy	Voltage ± ( 0.5% of reading+2digits ) Current ± ( 0.5% of reading+2digits )	Voltage± ( 0.03% of reading+10mV ) Current± ( 0.3% of reading+10mA )
Readback Accuracy	Voltage ± ( 0.5% of reading+2digits ) Current ± ( 0.5% of reading+2digits )	Voltage± ( 0.03% of reading+10mV ) Current± ( 0.3% of reading+10mA )
Constant Voltage Mode	Line Regulation	≤0.01%+3mV
	Load Regulation	≤0.01%+3mV
	Ripple&Noise	≤1mVrms ( 5Hz ~ 1MHz )
	Recovery Time	< 50μs ( 50% load change, minimum load 0.5A )
Constant Current Mode	Line Regulation	≤0.2%+3mA
	Load Regulation	≤0.2%+3mA
	Ripple&Noise	≤3mArms
Parallel Mode	Line Regulation	≤0.01%+3mV
	Load Regulation	≤0.01%+3mV
Series Mode	Line Regulation	≤0.01%+5mV
	Load Regulation	≤300mV
CH3	Output Voltage	(2.5/3.3/5V) ±8%
	Line Regulation	≤0.01%+3mV
	Load Regulation	≤0.01%+3mV
	Ripple&Noise	≤1mVrms ( 5Hz ~ 1MHz )
Locking Key	Yes	
Memory Save/Recall	5 Sets	
Max Output Power	220W	
Power Source	AC 100V/120V/220V/230V ±10% 50/60Hz	
Standard Configuration Interface	USB Device、LAN	
Insulation	Case to Terminal ≥20MΩ (DC 500V) Case to AC line ≥30MΩ (DC 500V)	
Operating Environment	Outdoor Usage: Elevation: ≤2000m Environment Temperature 0~40℃ Relative Humidity≤80% Installation Level: II Pollution Level: 2	
Storage Environment	Environment Temperature: -10~70℃ Relative Humidity≤70%	
Dimension	225(W)×143(H)×278(D) mm	
Weight	≈ 8.0kg	

## Ordering information

Product description	Product No
3 channels independent output, min resolution 10mV/10mA, USB Device & LAN, 4.3 inch LCD display	SPD3303X-E
3 channels independent output, min resolution 1mV/1mA, USB Device & LAN, 4.3 inch LCD display	SPD3303X

Standard Accessories
USB Cable -1
Quick Start -1
Product Certificate -1
Calibration Certificate -1
Power cord -1
Resources CD(product document and software )-1
Output Test Cord -2 Sets